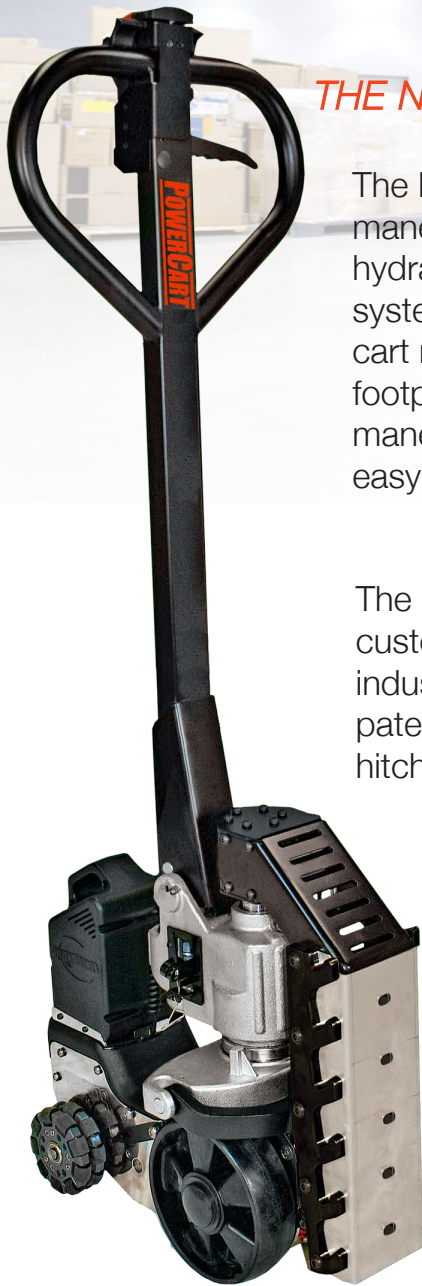


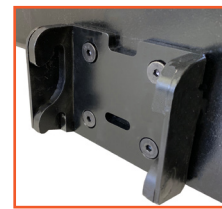
POWERCART H-SERIES

THE NEXT GENERATION OF INDUSTRIAL CART MOVERS



The **PowerCart H-Series** is a lightweight, compact and highly maneuverable electric industrial cart mover. The PCH combines the hydraulic lift system of a manual jack with a unique, quick-connect hitch system creating a fast, powerful, easy-to-use and highly maneuverable cart mover. With more than 180° of directional rotation at the hitch and a footprint of less than 11" wide at full turn, the PCH offers exceptional maneuverability in tight spaces. Additionally, the PCH is intuitive and easy-to-use either pulling or pushing loads weighing up to 3,500lbs.

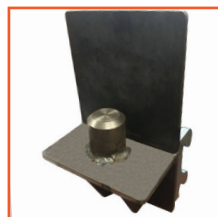
The PowerCart H-Series can be customized to fit nearly any type of industrial cart in the market using its patent pending, quick-connect hitch system.



POWERFUL



SPEED & CONTROL



QUICK CHARGE

Suitable for: HEAVY INDUSTRY, GENERAL MANUFACTURING, FOOD DISTRIBUTION, WAREHOUSE, AND MORE.

GENERAL SPECS

POWERCART H-Series Specs	Speed*		Load Moving Capacity		Drive Motor	Li-Ion Battery Pack		Recharge Time
	M/Min	MPH	Kg	Pounds		Amp Hours	Voltage	
	100	3.7	1,588	3,500		Brushless DC	5Ah	