
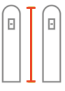








# HPT Series

The HPT Series is our range of hand pallet trucks with nominal capacity from 4,500 to 6,600 lbs, offering a very competitive and reliable solution for lifting and moving operations. Engineered featuring a quality production process, wide range of fork size and hydraulic unit type, they provide long-lasting strength and versatility. Thanks to their smooth movement and maneuverability, the HPT models are the ideal working tool for use on any kind of surface.

 4500 / 5500 / 6600 lb	 36-48 in	 20-27 in
 3.1 in	 7.6 in	 QUICKLIFT option

## PROPERTIES / ADVANTAGES

### QUALITY PRODUCTION



HPT Series is designed in a dedicated production plant, with robot welding, specific painting system through epoxy-polyester powder coating, to ensure the highest level of performance and durability.

### ENTRY / EXIT ROLLERS



Additional nylon rollers at the fork tip allows an easier pallet entry and exit.

### WIDE RANGE OF HYDRAULIC UNITS



Resistant and reliable one piece cast iron pump, in three different versions, worked with numerical control machine, including:

- Maximum pressure valve: safety device that ensures the transpallet against overloads. When the pressure inside the hydraulic circuit exceeds the set calibration value according to the maximum nominal flow, the valve automatically locks the forks.
- ON/OFF lowering valve

## CONFIGURATIONS



**STANDARD**  
Nylon steering wheels and Nylon rollers  
Two curves steering Handle



**OPTIONAL**  
Rubber and polyurethane steering wheels, polyurethane rollers. 4 curves covered handle.



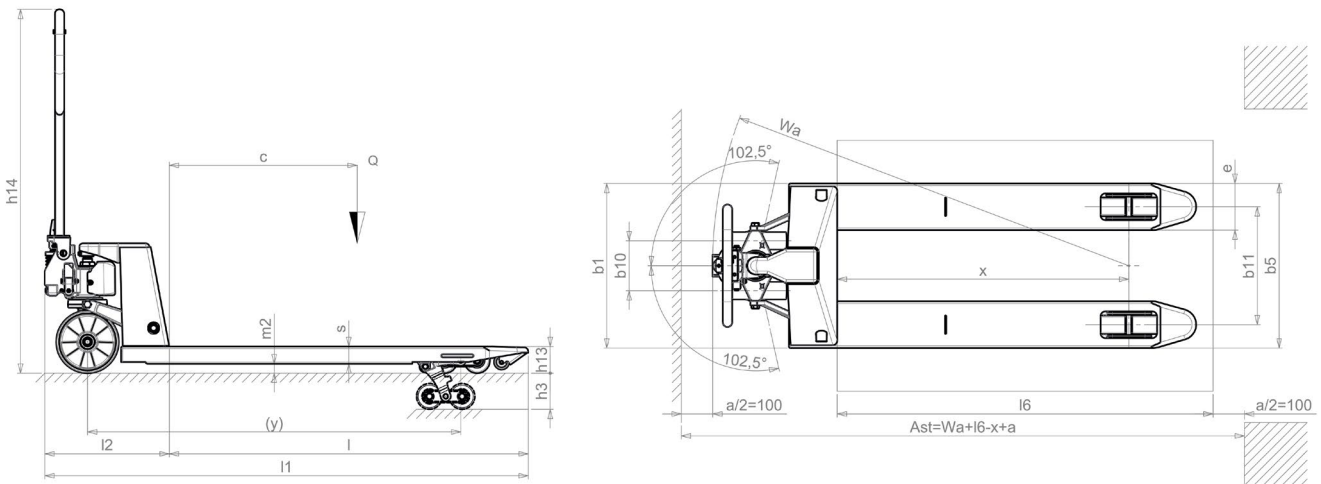
**OPTIONAL**  
Quick lift. The perfect tool to lift quicker your loads up to 330 lbs. The hydraulic pump is specifically engineered to cut job time and increase efficiency. It takes just 6 strokes to raise a pallet to full height, instead of 13 with the traditional HPT.

# Hand Pallet Truck

		HPT SERIES - HAND PALLET TRUCK					
DESCRIPTION	1.2	MODEL			GB ECO 20 S2-S4	GB 25 S2-S4	GB 30 S4
	1.3	DRIVE			MANUAL	MANUAL	MANUAL
	1.5	LOAD CAPACITY	Q	lb	4400	5500	6600
	1.6	LOAD CENTRE DISTANCE	c	in	24	24	24
	1.8	LOAD DISTANCE, CENTRE DRIVE AXLE TO FORK	x	in	39.6	39.6	39.6
	1.9	WHEEL BASE	y	in	49.7	49.7	49.7
	2.1	SERVICE WEIGHT		lb	145.5/149.9	156.5/160.9	191.8
TYRES/CHASSIS	3.1	TYRES			Nylon - Nylon	Nylon - Nylon	Nylon - Nylon
	3.2	TYRE SIZE, FRONT (Ø x width)		in	7.9x2.2	7.9x2.2	7.9x2.2
	3.3	TYRE SIZE, REAR (Ø x width)		in	3.2x3.2-2.4	3.2x3.2-2.4	3.2x2.4
	3.5	WHEELS, NUMBER (x=DRIVEN) FRONT/REAR			2/2-2/4	2/2-2/4	2/4
	3.6	TREAD, FRONT	b10	in	6.10	6.10	6.10
	3.7	TREAD, REAR	b11	in	21.1	21.1	21.1
DIMENSIONS	4.4	LIFT	h3	in	4.5	4.5	4.5
	4.9	HEIGHT OF TILLER IN DRIVE POSITION MIN/MAX	h14	in	25.6/48.4	25.6/48.4	25.6/48.4
	4.15	HEIGHT, LOWERED	h13	in	3.1	3.1	3.1
	4.19	OVERALL LENGTH	l1	in	63.8	63.8	63.8
	4.20	LENGTH TO FACE OF FORKS	l2	in	15.7	15.7	15.7
	4.21	OVERALL WIDTH	b1	in	27	27	27
	4.22	FORK DIMENSIONS	s/e/l	in	2.2/5.9/48.0	2.2/5.9/48.0	2.2/5.9/48.0
	4.25	DISTANCE BETWEEN FORK ARMS	b5	in	27	27	27
	4.32	GROUND CLEARANCE, CENTRE OF WHEEL BASE	m2	in	0.9	0.9	0.9
	4.34	AISLE WIDTH FOR PALLETS 800x1200	Ast	in	72.9	72.9	72.9
4.35	TURNING RADIUS	Wa	in	56.6	56.6	56.6	
PERFORMANCE DATA	5.2	LIFT SPEED, LADEN/UNLADEN		strokes	13/13	13/13	13/13
	5.3	LOWERING SPEED, LADEN/UNLADEN		ft/s	0.16/0.06	0.16/0.06	0.16/0.06
		MAX LOAD FOR QUICKLIFT FUNCTION		lb	-	330	330

**HPT available with fork size:**

**36"x20", 42"x20", 48"x20", 36"x27", 42"x27", 48"x27"**



**POWERHANDLING, INC.**

1110 W RIVERSIDE AVE, STE 400 SPOKANE WA 99201

TEL: 509-244-8860 Fax: 509-267-6428 / sales@powerhandling.com / www.powerhandling.com