



# RX10

RX is the most compact in the stackers' range, single mast, completely electric, suitable for loads up to 1765 lbs. and elevation up to 61", allowing a comfortable, safe use, with low maintenance costs, thanks to robust design with easy component's access. RX combines compactness and ergonomics, offering a wide range of applications distribution and manufacturing environments.



1,765 lbs.



61"



24V/54 Ah

## PROPERTIES / ADVANTAGES

### TILLER EVOLUTION



Fully integrated ergonomic techno-polymer tiller system including finger tip throttle and proportional fork controls, safety pushbutton, horn, turtle button, hourmeter, battery status indicator as standard equipment.

### VERSATILITY



It's ideal to move, even horizontally, palletized goods and at the same time it can be used as an adjustable working table, reducing stress for the operator who must place goods on a shelf.

### EASY MAINTENANCE



Strong ABS carter/cover with storage compartments on top. Easily removable to speed up maintenance operations. The bottom access opening allows an immediate disassembly of motor wheel, portal and tiller without lifting the machine.

### BATTERY PACK



Light-traction with tubular plate batteries allow up to four hours autonomy and a high number of charging cycle.

### ADJUSTABLE FORKS



Universal ISO FEM 2A fork holder allows a manual and easy fork adjustment to carry any kind of load, pallet or skid.

### ADJUSTABLE BASE LEGS



Adjustable base legs to fit with various pallet sizes and aisle widths. With its superior versatility and extreme durability, it is the ideal solution for any indoor application.

### FORKOVER DESIGN



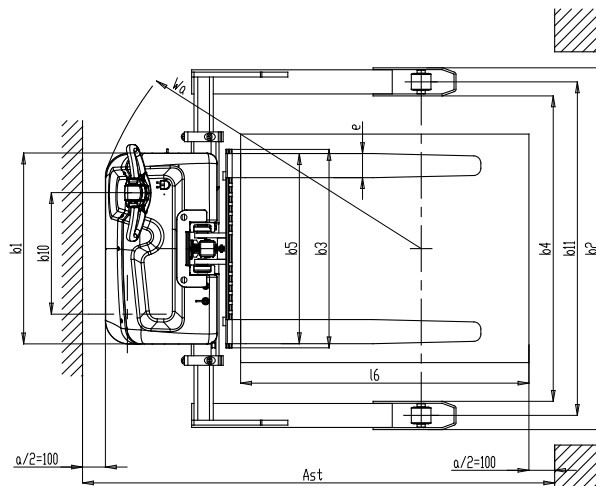
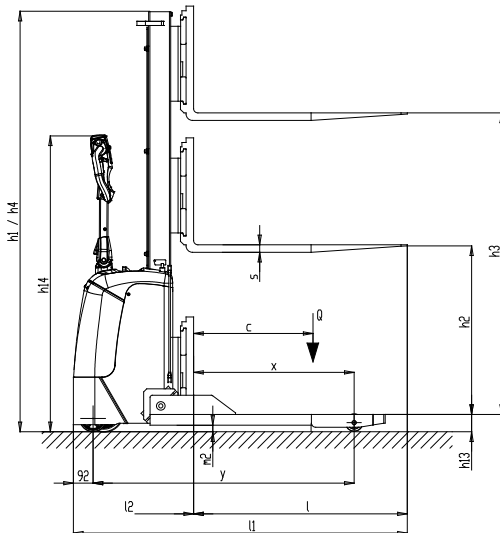
### AUTOLEVELLING SYSTEM (OPTIONAL)



This device permits an automatic forks lifting and lowering control depending on the load height.

# Monomast Stacker

				RX - MONO MAST ELECTRIC STACKER		
DESCRIPTION	1.2	MODEL		RX 08/16 EVO STRADDLE		
	1.3	DRIVE		ELECTRIC		
	1.5	LOAD CAPACITY	Q	lb	1765	
	1.6	LOAD CENTRE DISTANCE	c	in	24	
	1.8	LOAD DISTANCE, CENTRE DRIVE AXLE TO FORK	x	in	30	
	1.9	WHEEL BASE	y	in	46	
	WEIGHTS	2.1	SERVICE WEIGHT		lb	1091
TYRES/CHASSIS	3.1	TIRES			Rubber + Poly/Poly	
	3.2	TIRE SIZE, FRONT (Ø x width)		in	7.3 x 2.0	
	3.3	TIRE SIZE, REAR (Ø x width)		in	3.2 x 2.8	
	3.5	WHEELS, NUMBER (x=DRIVEN) FRONT/REAR				1x+1/2
	3.6	TREAD, FRONT	b10	in		19.9
	3.7	TREAD, REAR (MIN/MAX)	b11	in		42.8/54.6
	DIMENSIONS	4.2	HEIGHT, MAST LOWERED	h1	in	
4.3		FREE LIFT	h2	in		59.4
4.4		LIFT	h3	in		59.4
4.5		HEIGHT, MAST EXTENDED	h4	in		77.6
4.9		HEIGHT OF TILLER IN DRIVE POSITION (MIN/MAX)	h14	in		37.8/52.4
4.15		HEIGHT, LOWERED	h13	in		1.4
4.19		OVERALL LENGTH	l1	in		59.9
4.20		LENGTH TO FACE OF FORKS	l2	in		20.6
4.21		OVERALL WIDTH (FRONT/REAR MIN-MAX)	b1	in		31.3/47.4-59.2
4.22		FORK DIMENSIONS	s/e/l	in		1.4/3.9/39.4
4.25		DISTANCE BETWEEN FORK ARMS (MIN/MAX)	b5	in		9.1/31.1
4.26		DISTANCE BETWEEN FORK LEGS (MIN/MAX)	b4	in		38.0/50.0
4.32	GROUND CLEARANCE, CENTRE OF WHEEL BASE	m2	in		1.2	
4.35	TURNING RADIUS	Wa	in		53.2	
PERFORMANCE DATA	5.1	TRAVEL SPEED, LADEN/UNLADEN		mph		2.3/2.7
	5.2	LIFT SPEED, LADEN/UNLADEN		ft/s		0.39/0.69
	5.3	LOWERING SPEED, LADEN/UNLADEN		ft/s		0.82/0.69
	5.8	MAX GRADEABILITY, LADEN/UNLADEN		%		10/15
ELECTRIC MOTOR	6.1	DRIVE MOTOR POWER		kW		0.35
	6.2	LIFT MOTOR POWER		kW		2.2
	6.4	BATTERY VOLTAGE, NOMINAL CAPACITY		V/Ah		24/54
	6.5	BATTERY WEIGHT		lb		84
	6.6	ENERGY CONSUMPTION ACC. TO VDI CYCLE		kWh/h		0.45
	8.4	SOUND LEVEL AT DRIVER'S EAR		dB(A)		63



Distributed by



**POWERHANDLING, INC.**  
 1110 W RIVERSIDE AVE, STE 400 SPOKANE WA 99201  
 TEL: 509-244-8860 Fax: 509-267-6428 / sales@powerhandling.com / www.powerhandling.com